

February 21 (Upper Church)  
Our Lady of Czestochowa  
Our Lady of Siluva  
Our Mother of Sorrows  
Our Lady of China

March 21 (Lower Church)  
Founder's Chapel  
St. Pius X  
Queen of Missions  
Good Counsel  
Immaculate Heart of Mary

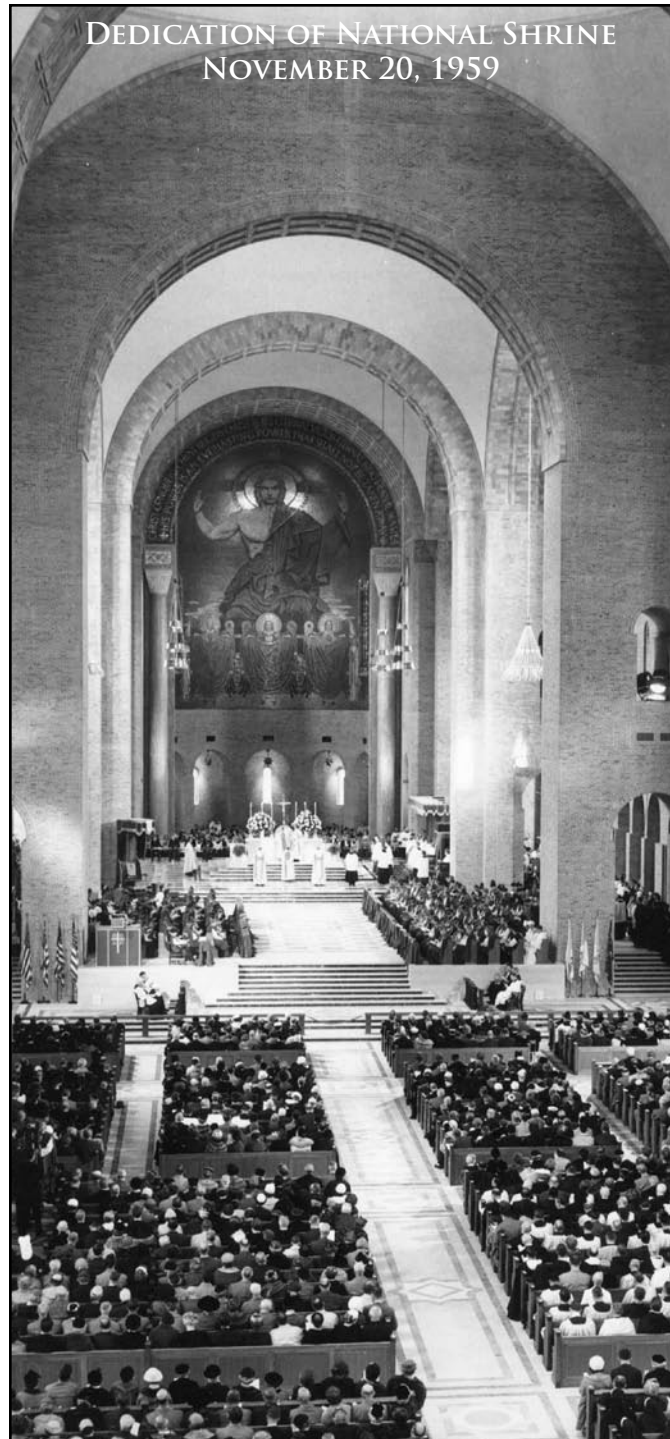
April 18 (Upper Church)  
Our Lady of Guadalupe  
Our Lady of the Miraculous Medal  
Queen of Ireland  
Our Lady of Pompei

May 16 (Lower Church)  
Our Lady of Mariazzell  
Our Lady of Antipolo  
Our Lady of Vailankanni  
Our Lady of Hope  
Our Lady of Holy Hostyn

June 20 (Upper Church)  
Our Lady of Mt. Carmel  
Our Lady, Help of Christians  
Our Lady, Queen of Hearts  
Mother of Perpetual Help

\* **Upper Church:** assemble in the Narthex, by the main doors.

\* **Lower Church:** assemble by the statue of the *Mother of Mankind*, Memorial Hall.



July 18 (Lower Church)  
Our Lady of La Vang  
Our Mother of Africa  
Our Lady of Lourdes  
Our Lady of Brezje  
Virgin Orantes (Byzantine-Ruthenian)

August 15 (Upper Church)  
Our Lady of Altötting  
Our Lady of Camarin  
The Blessed Sacrament Chapel  
Vatican Mosaics  
Immaculate Conception  
The Assumption

September 19 (Lower Church)  
Crypt Church commemorating the  
laying of the cornerstone  
(Sept. 23, 1920).  
Procession with visitations at  
chapels and oratories.  
Our Lady of Bistrica  
Our Lady, Queen of Peace

October 17 (Upper Church)  
Our Lady of the Rosary  
Our Lady of Fatima  
St. Thérèse of Lisieux

November 21 (Upper Church)  
50th Anniversary of the Dedication of  
the Basilica of the National Shrine  
Procession with visitations at chapels  
and oratories.

## PILGRIMAGE

The practice or custom of pilgrimage is rooted in Judaic tradition and the journey to Jerusalem. In the early days of Christianity, the faithful continued this tradition, eagerly journeying to the Holy Land to visit and pray at those places associated with the life of the Christ.

Over time, these journeys became acts of religious devotion that included not only penitential themes but also those of intercession and gratitude. Shrines dedicated to the Blessed Mother were the major pilgrimage sites then and remain so today.

The National Shrine is a pilgrimage church. The various chapels and oratories are filial in that each relates to the mother shrine in the country of origin or the particular religious community with which it is affiliated. One can make a pilgrimage to many of the great Marian shrines of the world at the Basilica of the National Shrine in Washington, D.C.

During this, our Jubilee year, the Basilica is offering a special opportunity to visit Marian sites famous throughout the world by way of our Jubilee Pilgrimage Hour. On the third Saturday of each month, from 3:00 to 4:00 p.m., beginning in February and ending in November 2009, the faithful may go on "pilgrimage" to select chapels and oratories of the BNSIC. Participants will join in the recitation of litanies, devotions, and songs in honor of Our Lady while "journeying" to each pilgrimage site.

Join us for our

## JUBILEE TRIDUUM

November 19, 2009

Solemn Mass

Upper Church

5:00 p.m.

The Bishops of the United States  
(USCCB)

November 21, 2009

Pilgrimage Saturday

Upper Church

3:00 - 4:00 p.m.

November 22, 2009

Solemn Mass

Upper Church

12 Noon

Closing of the Jubilee Year

BASILICA OF THE NATIONAL SHRINE  
OF THE IMMACULATE CONCEPTION  
400 MICHIGAN AVE., NE  
WASHINGTON, D.C. 20017  
(202) 526 - 8300  
WWW.NATIONALSHRINE.COM



A YEAR OF JUBILEE  
2008 - 2009

PILGRIMAGE SATURDAYS  
3:00 - 4:00 P.M.

3RD SATURDAY OF THE MONTH

BASILICA OF THE  
NATIONAL SHRINE OF THE  
IMMACULATE CONCEPTION  
WASHINGTON, D.C.